

AQUAFILTER

FAMILY

USER MANUAL

WHAT IT DOES

The Aquafilter removes germs from water to make it safe to drink. It is suitable for cleaning water from shallow wells, rivers, ponds and lakes.

The Aquafilter does not remove dissolved minerals, such as calcium or arsenic sometimes found in deep wells. Water from deep wells which needs treatment should be tested to find out what is needed. The Aquafilter does not remove salt from sea water.

HOW IT WORKS

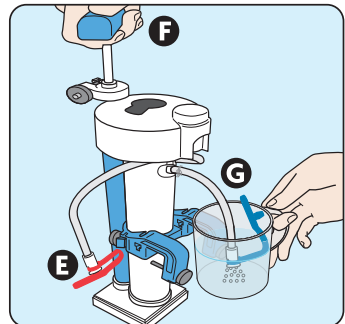
Very small holes (0.00002 millimetres in size) in the main filter hold back germs, but allow water to pass through. This makes the water good for drinking without the need to add chlorine or other chemicals. The dirty water first passes through a separate mesh and is then pumped through the main filter. As clean water is pumped out, some dirt may get stuck and need washing out with the small water pump supplied. If dirt is still stuck in the holes, it can be washed by the tablets supplied.

! SAFETY

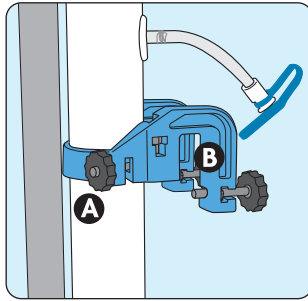
1. Never drink water coming from pipe with the red stopper.
2. Empty dirty water in the bottom of the box or bucket at least once a week.
3. Do not store the Aquafilter in sunlight.
4. To check drinking water is clean:
 - Take filter out of water.
 - Close red stopper (E), open blue stopper (G).
 - Put outlet pipe into a mug of clean water.
 - Pump the handle (F).

If bubbles keep coming out of the outlet pipe, it may be faulty.

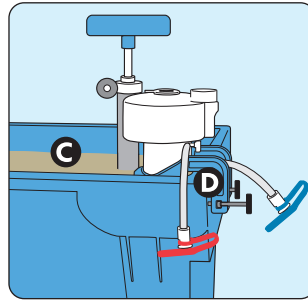
STOP USING IT AND CONTACT YOUR SUPPLIER.



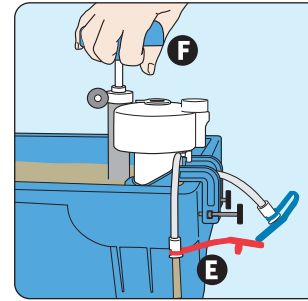
TO GET CLEAN WATER



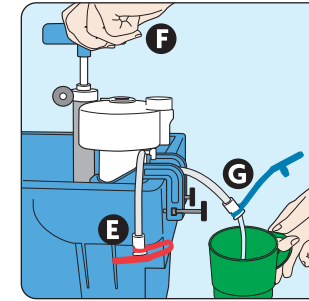
1. Loosen knob (A). Move bracket (B) to fit filter in box or bucket. Tighten knob (A).



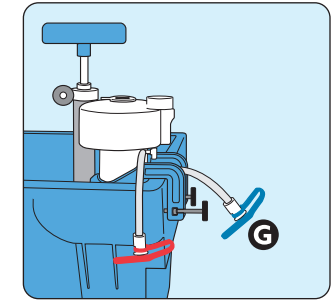
2. Fill box with water (C). Fasten on filter (D).



3. Open dirty water outlet (red stopper) (E). Pump 10 times (F). Repeat everyday.



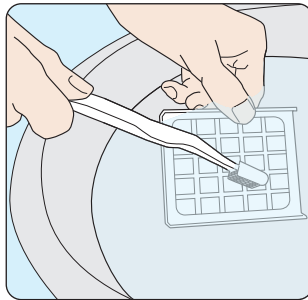
4. Close red stopper (E). Open blue stopper (G). Pump (F) to get clean water out of pipe (G).



5. Close blue stopper after use (G).

TO CLEAN THE MESH FILTER

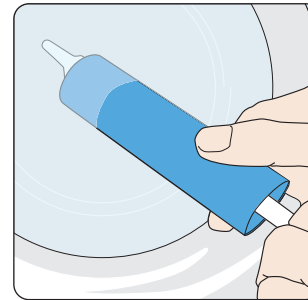
- If the water flow reduces



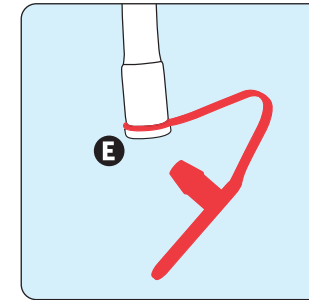
1. Remove the mesh and wash in clean water.

TO BACK FLUSH

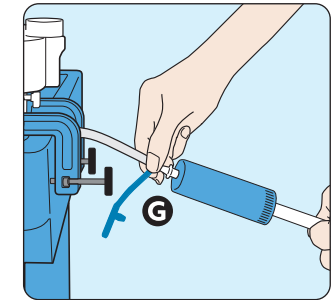
- If the water flow is no better



1. Fill water pump with clean water.



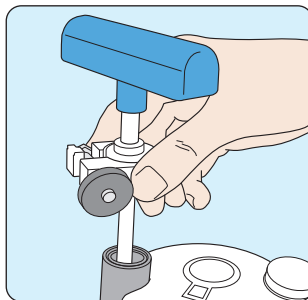
2. Open red stopper (E).



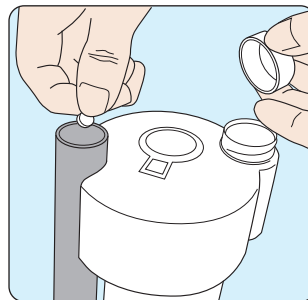
3. Pump water through outlet pipe (G) with water pump. Repeat 5 times.

TO CLEAN WITH TABLET

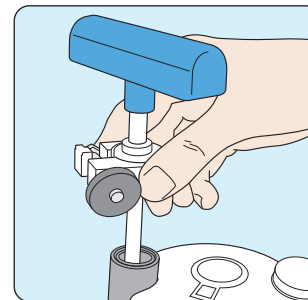
- If flow is still no better



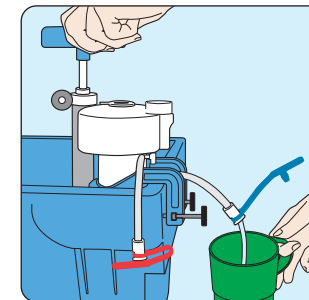
1. Remove the pump. To be done in the evening.



2. Take a tablet from the pot, drop in the hole. Leave for 15 minutes.



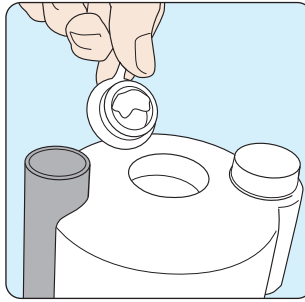
3. Replace the pump. Close the red stopper, pump 5 times. Leave for one night.



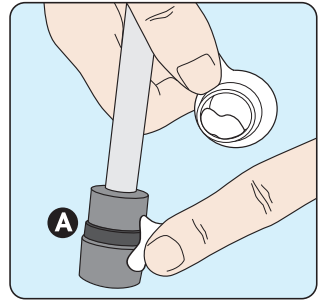
4. Next Morning: Pump for clean water. Throw away the first 2 cups. Then use.

TO GREASE THE PISTON SEAL

- If pumping becomes hard



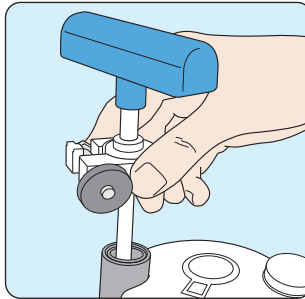
1. Open the grease pot.



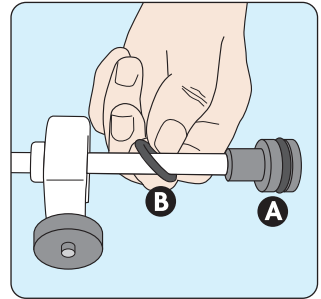
2. Wipe grease onto the piston ring (A).

TO REPLACE A PISTON SEAL

- If the pump leaks



1. Remove the pump.



2. Pull off the old ring (A). Replace with the new one on the rod (B).

AQUAFILTER

FAMILY

The safe water trust ltd

www.aquafilter.org.uk

email: info@aquafilter.org.uk

+44 (0) 191 536 3851

Jointly Developed with

AQUABOX

www.aquabox.org

+44 (0) 1629 825 178